

ROOFING PRODUCTS

Vents, terminals, adaptors
& accessories

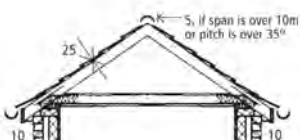


Contents

Ventilation Regulations	3
UB19 Ubivent Tile/Slate Vent	4
UB8 Plain Tile Vent	5
UB62 In-line Tile Vent	6
UB16 Universal Tile Vent	7
UB11 Vepac Roof Ventilating Slate	8
UB17 Slate Space Vent	9
OFVS Over Fascia Ventilating System	10
DOS10/25 Fascia Vent	12
Eaves Guard	13
BCF55 Bird Comb Filler	14
Sim-Fix® Slate Strap	15
RB100 Roll Out Rafter Tray	16
Flexible Dry Ridge Kit and Hip Accessories	17
Universal Dry Verge System	18
UB34/35 Multivent Terminal	19
UB46/47/48 Universal Insulated Terminal	20
UB41 Universal Service Terminal	21
UB30 WEP Water Expansion Pipe Outlet	22
UB37 Plain Tile Terminal	23
UB39 Vepac Terminal	24
Adaptors, Connectors & Pipes	25
Flat Roof Vent/Terminal	28
Replacements for discontinued products	30

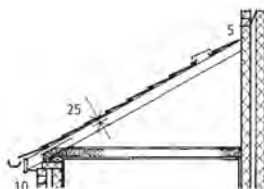
Cold Roof Void

Pitched Roof over 15°



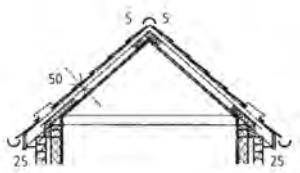
Cold Roof Void

Mono Pitched Roof over 15°



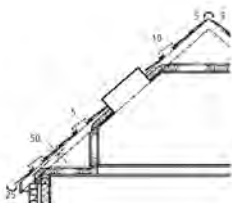
Warm Roof Void

(non convection tight)



Warm Roof Void

Roof window or other obstruction in a fully inclined ceiling



» VENTILATION REGULATIONS «

Pitched Roofs

Building Regulation C2, Roofs (Resistance to damage from interstitial condensation) 6.10 - A roof will meet the requirement if it is designed and constructed in accordance with clause 8.4 of BS5250, BS5534 and EN ISO 13788. These and other situations are shown in the diagrams opposite. Tiled or slated pitched roof slopes of 15° and above should be provided with ventilation openings equivalent to the following continuous openings:

Cold Roof

Low level ventilation to two opposite sides - 10mm
High level ventilation to two opposite sides for pitches over 35° and spans over 10m - 5mm

Warm Roof (non-convection tight)

Low level ventilation to two opposite sides - 25mm
High level ventilation to two opposite sides - 5mm

Lean-to & Mono-pitched roofs

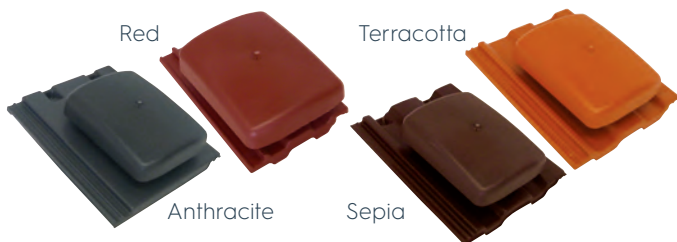
Low level ventilation cold roof - 10mm
Non-convection tight warm roof - 25mm
High level ventilation - 5mm
For roofs incorporating type LR underlays please refer to BS5250.

Slope vents

Guide to positioning of slope vents

Code	Free Vent Area mm ²	Spacing of vents (m) equivalent to continuous opening		
		5mm	10mm	25mm
UB19	22,000	4.400	2.200	0.880
UB8	6,250	1.250	0.625	0.250
UB11	10,750	2.150	1.075	0.430
UB16	18,750	3.750	1.800	0.750
UB17	10,000	2.000	1.000	0.400
UB62	15,000	3.000	1.500	0.600

UB19 Ubivent Tile/Slate Vent



Design & Performance

The UB19 is a streamlined hood suitable for most roof finishes and has a free vent area of 22,000mm². This unit allows less vents to be used to meet British Standards due to the higher free vent area. UB19's are suitable for roofs pitched above 17.5 degrees. For the UB19 to be converted into a terminal for soil & vent, mechanical & natural ventilation. See page 25.

Material

Polypropylene

Colour

Standard colours: Red, Terracotta, Anthracite, Sepia

Profile	Red	Terracotta	Anthracite	Sepia
Modern (MD/MDA)	•		•	•
Mendip (MEN)	•		•	•
Ludlow Major (MLM)	•	•	•	•
Ludlow Plus/49 (GSA)	•		•	•
Double Roman (FRA)	•	•	•	•
Wessex (WS)			•	•
Stonewold (SWA)			•	•
Regent (NER)			•	•
Renown (RS)			•	•
Mini Stonewold (MST)			•	
Caledonian (CD)			•	•
Delta (DS)			•	•
Centurian (ACT)	•		•	
Marley Bold Roll (MBR)	•		•	•
Norfolk Pantile (RE)	•		•	
Slate 500x250 (NJ)			•	
Slate 600X300 (NS)			•	
Slate 600x450 (NL)			•	
Plain Tile 500x640 (PTU)	•		•	•

UB8 Plain Tile Vent



Design & Performance

The UB8 is an in-line roof ventilating tile for use in small plain non-interlocking tiles. Designed specially to merge into the surface of plain tiles without disturbing the roofline, each UB8 has a free vent area of 6,250mm². The design features a slotted insect inhibitor to keep out large insects and vermin. UB8 plain tile vents are suitable for both high and low level ventilation and can be installed without batten or tile trimming.

UB8 units are also available for the termination of building services by adding a UB8 connector (294304) (soil & vent, mechanical and natural ventilation) – see UB37 Plain Tile Terminal on page 23.

The UB8 clay slip unit has the same technical data as the standard UB8, but allows you to apply your own cut tiles to give colour matching.

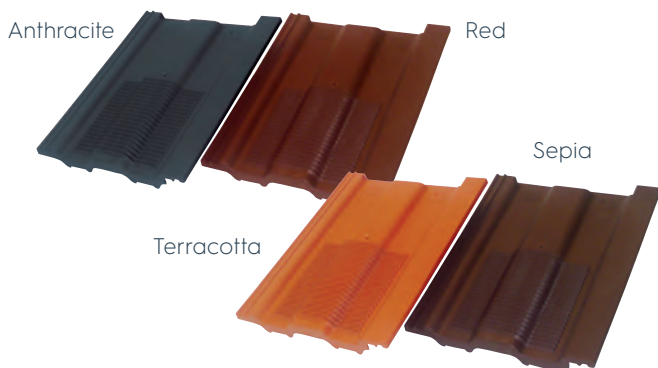
Material

Polypropylene

Colour (UB8's only)

Standard colours: Red, Terracotta, Anthracite, Sepia

UB62 In-line Tile Vent



Design & Performance

The UB62 in-line tile vent offers high performance whilst retaining the aesthetics of the roof design. It is designed to provide ventilation of the roof space, either at high or low levels.

UB62s are suitable for pitches above 25° and may be used to supplement or replace other ventilation such as dry ridge, abutment or eaves systems. They are also suitable for ventilation of compartmental roof spaces, such as fire walls.

With the use of a stepped adaptor, the UB62 can also be used for mechanical extraction or with soil pipes for removal of foul air.

The UB62 provides up to 15,000mm² of free vent area, and has a large insect and vermin grille.

Material

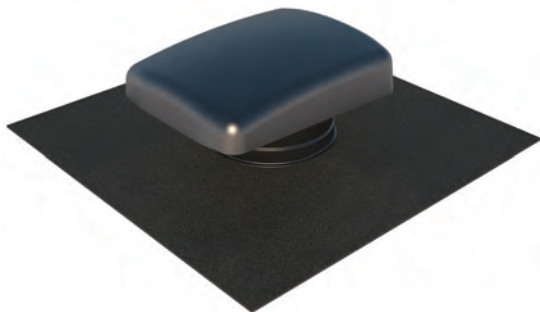
Polypropylene

Colour

Standard colours: Red. Terracotta. Anthracite. Sepia

Profile	Red	Terracotta	Anthracite	Sepia
Modern (MD/MDA)	•	•	•	•
Ludlow Major (MLM)	•	•	•	•
Double Roman (FRA)	•	•	•	•
Double Pantile (MEN)	•	•	•	•
Ludlow Plus/49's (GSA)	•	•	•	•

UB16 Universal Tile Vent



Design & Performance

The UB16 is a universal roof vent for use in most tiled and slated pitched roofs without the need to identify the make or design of the tiles or slates.

The unit comprises a streamlined hood on a circular upstand with a 500mm x 500mm Ubiflex flashing skirt. The upstand protrudes below the Ubiflex skirt to form a 160mm diameter penetration sleeve. The free vent area of the UB16 is 18,750mm² and it has an integral mesh to stop the ingress of large insects and vermin.

If a matching terminal is required the UB41 should be used – see page 21.

Material

Ubiflex skirt around PVC-u upstand with streamlined hood

Colour

Hood: Red, Terracotta, Anthracite, Sepia

Red hood & Terracotta hood = Terracotta Ubiflex

Anthracite hood & Sepia hood = Black Ubiflex

UB11 Vepac Slate Vent



Design & Performance

The UB11 Vepac vent is an in-line unit with a multi-purpose base which will provide inconspicuous ventilation in natural and man-made slate roofs (suitable for 600mm x 300mm and 500mm x 250mm). Ubbink now also offer a larger unit which is only suitable for 600mm x 300mm slates.

UB11s are suitable for high or low level ventilation in roofs of 25° and over. Each vent has a slotted inhibitor to keep out large insects and vermin and provides a free vent area of 10,750mm².

This vent can be adapted for use as a service terminal with a vepac connector and lower pipe – see UB39 on page 24.

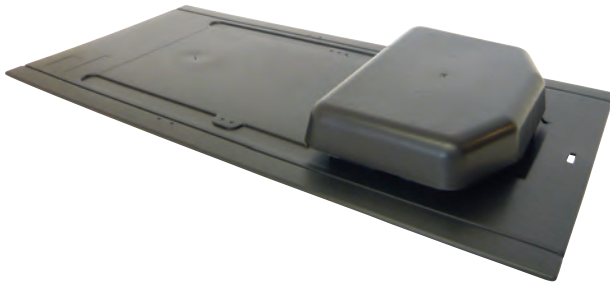
Material

Polypropylene/Copolymer

Colour

Anthracite

UB17 Slate Space Vent



Design & Performance

The UB17 Slate Space Vent is a roof void ventilator for use in slates.

The base as supplied is a direct replacement for a 600mm x 300mm slate. When the 25mm side bands are trimmed off and the inner set of fixing points are used, the unit is then a direct replacement for a 500mm x 250mm slate.

The UB17 is suitable for both high and low level ventilation and has a free vent area of 10,000mm².

The vent can be adapted for use as a service terminal with a UB17 adaptor. See page 26.

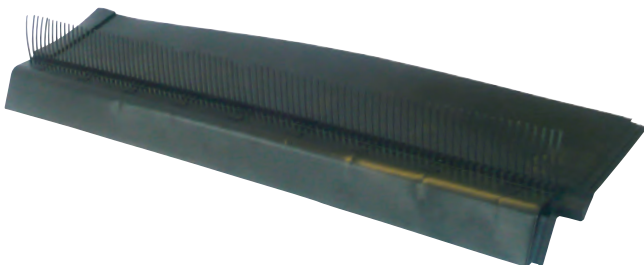
Material

Polyethylene

Colour

Black

OFVS Over Fascia Vent System



Design & Performance

The Ubbink Over Fascia Vent System is a one-piece interlocking system fitted to the top of the fascia which provides:

- Eaves level continuous ventilation
- Semi-rigid hinged underlay support flap
- Large insect and vermin inhibitor
- Discharge of water from underlay to gutter
- Under tile bird excluder (OFVS10 only)

There are two types of OFVS system available which are suitable for use in roof pitches 15° - 70° although below 23° additional support may be needed for the support flap to prevent ponding.

OFVS10 & OFVS10L provide 900mm length x 10mm continuous ventilation.

The interlocked strips are nailed to the top of the fascia and nail fixings should be calculated in accordance with BS5534.

The fixing points are designed to eliminate any water leakage as are the interlocks between strips.

It should be noted that some cellular PVC-u fascia boards cannot take vertical fixings. In such cases the system may be fixed through its underlay support into a batten fixed to the rafters behind the fascia board. However, space must be left between the back of the fascia board and the fixing batten to allow air to pass into the roof void.

In full boarded roofs, a section of boarding immediately behind the fascia should be removed to allow air to pass into the roof void.

OFVS Over Fascia Vent System (continued)

At hips and valleys, the system should be sawn to form tight fitting mitred joints. To prevent possible leakage at valleys, a flashing of underlay material should be positioned under the joint to discharge into the gutter.

In a parapet/valley gutter situation in the absence of a fascia, it may be possible to introduce a timber fillet on which the system can be fixed.

When installing OFVS, due allowance must be made for the height of the system. The following figures can be used as guidelines:

Pitch of Roof Allowance	OFVS10 & OFVS10L
15-50°	20mm
51-55°	25mm
56-60°	30mm
61-65°	35mm
66-70°	40mm

Material

Polypropylene

Colour

Black

DOS10/25 Fascia Vent



Design & Performance

DOS10/25 is an over fascia vent strip. It is designed with a radiused leading edge to protect the felt and has an integral large insect and vermin inhibitor.

DOS10 is 28mm high x 35mm deep x 1.0m. The strips lock together and provide 10,000mm² per metre of continuous ventilation.

DOS25 is 32mm high x 35mm deep x 1.0m. The strips lock together and provide 25,000mm² per metre of continuous ventilation.

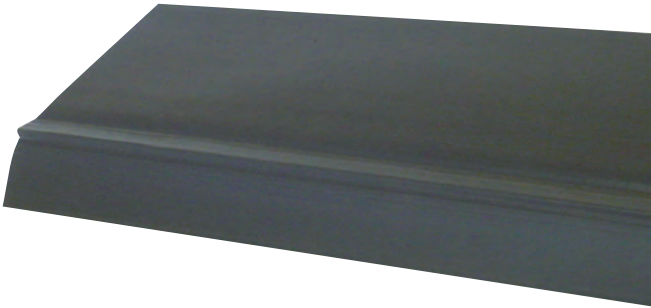
Material

Polypropylene

Colour

Black

Eaves Guard



Design & Performance

The Ubbink Eaves Protection System is designed for use in both refurbishment projects and new build to provide an effective level of eaves protection.

Available in 1.5m lengths, the rigid pre-formed strips are suitable for use in roof pitches of 15° - 70°. On existing buildings, Eaves Guard can be used to replace rotted gutter felt with the minimum of disruption to the existing slate or tile roof covering.

In new build situations, the preformed Eaves Guard strip directs water away from the underlay and into the gutter. At the same time it provides an effective underlay support flap, preventing ponding of the underlay behind the fascia board. Eaves Guard is ideal for use with the new generation of lightweight, high performance underlays, which are not suitable for forming a drip into the gutter.

Eaves Guard is fixed to the top of the fascia with clout nails. If a plastic fascia is used which will not support clout nails, Eaves Guard may be fixed to a batten behind the fascia.

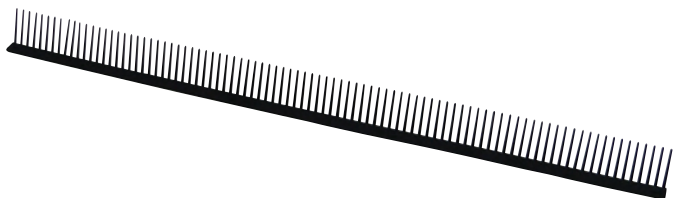
Material

PVC-u

Colour

Black

BCF55 Bird Comb Filler



Design & Performance

The Ubbink Bird Comb Filler prevents the ingress of birds between the underside of profiled tiles and the underlay on pitched roofs.

Manufactured in 1.0m strips, it is predrilled ready to fix to the top of the fascia and the teeth of the comb prevent birds from entering and nesting in the spaces under tile profiles.

Material

Rigid polypropylene

Colour

Black

Sim-Fix® Slate Strap



Design & Performance

Quick and easy to use, the Sim-Fix® is designed to re-fix all sizes of slates which have slipped from their original position. As well as securing against slippage it also secures against wind uplift. With its unique ratcheted retaining clip Sim-Fix® can be used with all common slates. It is manufactured to blend in with the roof once fixed into position.

Material

Made from durable weather and pollution resistant nylon.

Colour

Black

RB100 Roll Out Rafter Tray



Design & Performance

RB100 Roll Out Insulation Rafter Tray provides a minimum 25mm clear airway between the ceiling insulation and the roof underlay and is suitable for use in cold roofs. It is used in conjunction with eaves ventilation products.

Each Roll is 6m long and available in 300mm, 400mm, 600mm, 800mm and 900mm widths.

Material

PVC-u

Colour

Black

Flexible Dry Ridge Kit



BS8612
Compliant
as tested
by the BRE

Design & Performance

The Ubbink Flexible Dry Ridge Kit is a mortar free system to mechanically fix the ridge tiles according to BS5534. It is easy to install under most weather conditions and the kit offers enough components for a typical ridge of up to 6m. The kit provides high level ventilation, is watertight and has a wind uplift to suit most UK properties.

This is a truly ventilating ridge kit for flat interlocking, slate and plain tile as well as profiled tiles.

It matches a comprehensive range of ridge tiles, including:

- Redland Universal Angle
- Half Round/Segmental
- Marley Modern

Dry Ridge Kit components:

- 13 ridge unions
- 26 ridge clips
- 13 clamping plates
- 13 waterproof screws
- 1 ridge roll (6m x 300mm)
- 10 ridge batten straps
- Installation guide

Hip trays are available in Black 1200mm long and are quick and easy to install. There is no need for mortar when installing and can be installed in most weather conditions. The trays are suitable to be used with slates, plain tiles, concrete flat and profile tiles.

Hip accessories:

- Hip Trays 1200mm
- Short tile clips
- Long tile clips

Universal Dry Verge System

BS8612
Compliant
as tested
by the BRE



Design & Performance

The Universal Dry Verge is a mortar free system to mechanically fix the verge tiles according to BS5534 and meets all NHBC Regulations giving a 10 year warranty. The ambi units have a water channel built in to prevent water staining, often a common issue with other dry verge systems.

With a batten gauge of 255mm to 355mm the system suits most popular profile tiles including the thin leading edge tile. Included in the system is a batten bracket, which gives a secure fixing to the end of the cut flush batten ensuring there is a straight/equal install line for the verge.

The system suits roof pitches up to 55° and is easy and quick to install. It offers integral solutions for a secure fixing to the roof. The unique starter unit at the eaves offers three different installation options: fixing to the barge board; to the fascia board; or to the lowest batten. It can also be installed with or without the gutter in place.

Dry Verge System Components

- Ambi verge units
- Half round/segmental or universal angled ridge end cap
- Starter unit (incorporates closure)
- Batten bracket

Material

Ambi verge units and Ridge End Caps; PP Talc, UV resistant
Brackets and Starter Units; PP Talc

Colours

Grey, Brown, Terracotta

UB34/35 Multivent Terminal



Design & Performance

Specially designed for systems requiring a low resistance terminal, the Multivent Service Terminals are suitable for mechanical and natural (passive) ventilation installations. The pipework above the roofline is twin walled and incorporates an integral condensation drain. Two models are available, the UB34 with an internal diameter of 125mm and the UB35 with an internal diameter of 160mm and suitable for tiled and slated pitched roofs.

The unit is suitable for roof pitches of 25° to 45° and comes complete with flashing – a universal base for both tiles and slates (160mm dia). Special lower and higher pitch versions are available to order.

The free vent areas of the units are:

125mm dia = 12,250mm²

160mm dia = 18,750mm²

The pressure airflow resistance of both units is <1.0 Pascal at 225m³/h.

Material

Stack and cowl: polyethylene

Tiled & slate flashing: polyethylene & Ubiflex non-lead flashing

Colour

Black

UB46/47/48 Universal Insulated Terminal



Design & Performance

The insulated terminal offers greater efficiency for the modern domestic heat recovery ventilation systems when terminated through the pitch of a roof. They are suitable for natural (passive) and mechanical ventilation installations.

All 3 models are suitable for tiles and slates with 25° to 45° pitch.

The free vent areas and diameters of the units are:

UB46 125mm dia = 12,250mm²

UB47 150mm dia = 17,750mm²

UB48 180mm dia = 19,100mm²

The pressure airflow resistance of all units is <1.0 Pascal at 225m³/h.

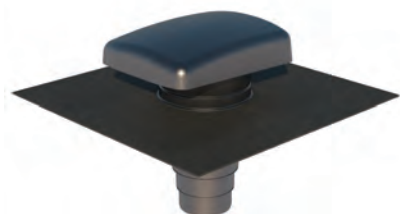
Material

Injection moulded/Vacuum formed/Ubiflex

Colour

Black

UB41 Universal Service Terminal



Design & Performance

The UB41 is a Universal Service Terminal for use in most tiled and slated pitched roofs without the need to identify the make or design of the tiles or slates. The unit comprises a streamlined hood on a circular upstand, a 500mm x 500mm Ubiflex flashing skirt and stepped adaptor which allows connections from 100mm to 160mm diameter ducting. The unit may also be used to terminate soil & vent pipes where an external pressure test is not required. The free vent areas and pressure/airflow resistance readings for the UB41 are as follows:

Diameter (mm)	Free Vent Area (mm ²)	Pressure/Airflow resistance (Pascals)	
		100m ³ /h	225m ³ /h
100	7,850	7.5	7.5
110	8,850	4.5	16.0
125	12,250	5.3	24.0
150	17,750	6.5	31.0
160	18,750	6.5	31.0

The unit is easy to install – the adaptor is cut off at the required diameter and attached to the undertile spigot with solvent weld/PVC glue. The Ubiflex flashing allows fitting into most tiles/slates.

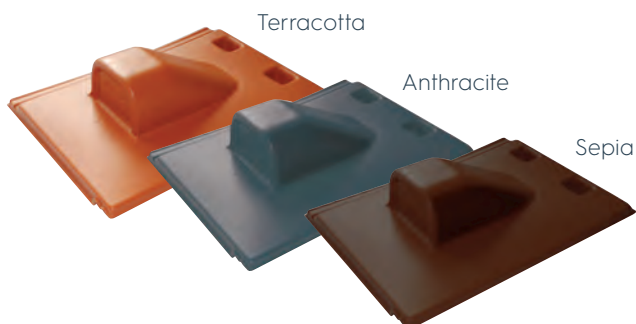
Material

Ubiflex skirt around PVC-u upstand with streamlined hood together with a stepped adaptor

Colour

Hood: Red, Terracotta, Anthracite, Sepia
Red hood & Terracotta hood = Terracotta Ubiflex
Anthracite hood & Sepia hood = Black Ubiflex

UB30 WEP Water Expansion Pipe Outlet



Design & Performance

The Ubbink UB30 WEP is a pre-shaped flashing unit designed to provide a practical and aesthetically pleasing method for penetrating a pitched roof covering with horizontal pipework or cabling. The WEP system eliminates the need for installing lead flashings around pipe exit points, as well as the need to cut any of the surrounding tiles or slates.

The UB30 is available with grommets to accommodate diameters from aerial cables to 18mm pipes and are suitable for most domestic cistern overflow and warning pipes.

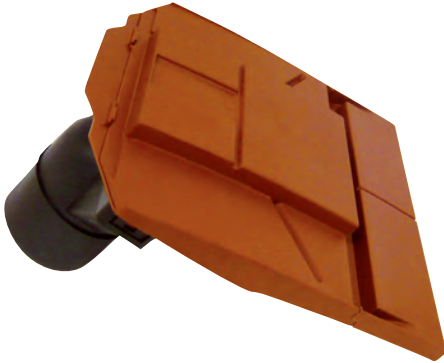
Material

Polyethylene

Colour

Standard colours: Terracotta, Anthracite, Sepia

UB37 Plain Tile Terminal



Design & Performance

The Ubbink Plain Tile Terminal is an in-line pitched roof terminal for use in small plain non- Interlocking tiles. It is suitable for terminating 110mm diameter mechanical extract systems and soil & vent systems where an external pressure test is not required.

For aesthetic purposes, the UB37 terminal matches the UB8 roof ventilating tile (please see page 5).

The UB37 has a free vent area of 6,250mm² and a pressure/air-flow resistance reading of 11Pa at 100m³/h.

Material

Unit: Polypropylene

Adaptor: Styrosun® 3600 UV Resistant High Impact Polystyrene

Colour

Red, Terracotta, Anthracite, Sepia

UB39 Vepac Terminal



Design & Performance

The Ubbink Vepac Terminal is an in-line service terminal for use in slated roofs in pitches of 25° and over.

The UB39 is suitable for terminating 110mm diameter mechanical extract systems and soil & vent systems where an external pressure test is not required.

For aesthetic purposes, the UB39 terminal matches the UB11 roof ventilating slate (please see page 8).

The UB39 has a free vent area of 7,800mm² and a pressure/airflow resistance reading of 19.0 Pascals (reading taken at 100m³/h).

Material

Slate vent and adaptor: Polypropylene Copolymer

Pipe: Polyethylene

Colour

Anthracite

Adaptors, Connectors & Pipes



UB19 Felt Sleeve & Adaptor

These adaptors allow the on-site conversion of UB19 Tile/Slate vents to service terminals.

The felt sleeve click-fits in place into the underside of the UB19. The stepped adaptor is cut off at the required diameter and then pushed onto the sleeve. The joint between the felt sleeve and adaptor should be sealed with PVC solvent weld.

UB19 with Felt Sleeve & Adaptor

Diameter (mm)	Free Vent Area (mm ²)	Pressure Airflow Resistance (Pascals)	
		100m ³ /h	200m ³ /h
110	8,850	3.2	12.8
125	12,250	4.5	18.0
150	17,775	5.8	23.0
160	18,750	6.0	24.2

Material

Styrosun® 3600 UV Resistant High Impact Polystyrene

Adaptors, Connectors & Pipes (continued)



UB17 Connector & Lower Pipe

Adaptor to convert a UB17 Space Slate Vent into a service terminal with a 110mm diameter spigot.

Material

Polypropylene



UB11 and Vepac Connector & Lower Pipe

The UB11 and Vepac Connector & Lower Pipe convert the UB11 vent to the UB39 terminal with a spigot diameter of 110mm.

Material

Polypropylene

Adaptors, Connectors & Pipes (continued)



Connector for UB8

UB8 connector converts the vent into a UB37 terminal with a 110mm diameter spigot.

Material

Styrosun® 3600 UV Resistant High Impact Polystyrene



Flexible Pipes and Seals (FPJs)

The FPJs110/110 is a 600mm black polyethylene moulded flexible pipe which connects soil and vent pipe terminals to the systems allowing for an offset of up to 200mm. The units come complete with sealing rings.

Flat Roof Vent/Terminal



Design & Performance

The Ubbink OFT range vents are capped stacks for use in the below roof types;

- Asphalt
- Built up felt
- EPDM
- Bitumen
- GRP roofs

The OFT/1 and OFT/4 are suitable for use with soil & vent systems and for both mechanical and natural (passive) ventilation installations (available in all materials).

The OFT/2 is a 100mm/160mm diameter void vent.

The OFT/4 has a special low air resistance cowl – the pressure/airflow resistance is <1.0 Pascal at 225m³/h (available in all materials). The pipework above the roof-line is twin walled and incorporates an integral condensation drain. The stack pipe has an integral collar and separate flashings to match the above mentioned materials.

OFT range information continued on next page >

Flat Roof Vent/Terminal (continued)

The OFT 5 insulated terminal range is suitable for use with heat recovery and high volume extract fans and for both mechanical and natural (passive) ventilation installations. The OFT/5 has a higher insulation value above the roof space which therefore reduces the risk of condensation.

Code	Dia.	Height above roof	Flange dia.	Depth below flange	Free vent area	Pressure/ airflow resistance
	mm	mm	mm	mm	mm ²	Pa
OFT/1	110	220	330	600	8,400	5.9
	160	240	363	600	18,750	3.0
OFT/1A	110	415	395	350	8,400	1.5
	131	500	450	350	12,000	1.1
	166	522	450	350	20,000	1.0
OFT/2	110	220	330	10	8,400	
	160	240	363	10	18,750	
OFT/4	110	465	395	350	8,400	<1.0
	131	465	450	350	12,000	<1.0
	166	510	450	510	20,000	<1.0
OFT/5	125	522	490	608	11,300	5.3
	150	522	490	608	14,400	1.3
	180	560	495	699	19,100	1.3

*Readings for OFT/1F &OFT/1A at 100m³/h. Readings for OFT/4 at 225m³/h. Readings for OFT/5 at 200m³/h.

Replacements for discontinued products

Ubbink's new range of roofing products covers all your applications. However in some instances, the product or product number for your application may have changed. Please refer to the table below.

Old UB Number	Replaced With
UB5 (Flat Box Hood)	UB19
UB15 (UB5 with felt sleeve)	UB19 + Felt Sleeve
UB20 (UB19 with felt sleeve)	UB19 + Felt Sleeve
UB60 (Hollow Tile)	UB62
UB18 (Hollow Tile with spigot)	UB62
UB23 (UbiSoil)	UB19 + Felt Sleeve & Adaptor
UB25 (UbiFresh)	UB19 + Felt Sleeve & Adaptor
UB42 (Hollow Tile with 110mm spigot)	UB62 + Adaptor
OFT/3 (Flat Roof Void Vent)	OFT/2
UB32/44 (MVC service terminals)	UB19 + Felt Sleeve & Adaptor



ENERGY



VENTILATION



BUILDING



Ubbink (UK) Ltd

@ sales@ubbink.co.uk •  www.ubbink.com

Copyright © 2021 Ubbink | Content is subject to change without notice;
no liability for errors and misprints | Availability and configurations may differ
per country | UB-2021-03-V01-UK-EN